



# LISTING HIGHLIGHTS

OFFICE: 807.468.3541 TOLL FREE: 800.528.8848 FAX: 807.468.4676  
138 MAIN STREET S. | KENORA ONTARIO | P9N 1S9 | CABINCOUNTRY.COM



## PIN 42150-2818 LOC S566 Corkscrew Island Ptarmigan Bay

### Lot

- +/- 113 acres of land
- South exposure
- Low profile with higher cliff lookout point
- Excellent privacy

### Improvements

- Original log cabin
- Built in 1907
- 4 bedrooms/1 bathroom
- +/- 1,976 sq. ft.
- Newer shingles
- 1 bedroom guest cottage (35 x 10)
- 24' x 36' crib foundation boathouse with living quarters above
- 36' x 24' double stall garage (late 90s)
- Honda Generator

**Services:** Generator, propane appliances, septic field, lake drawn water

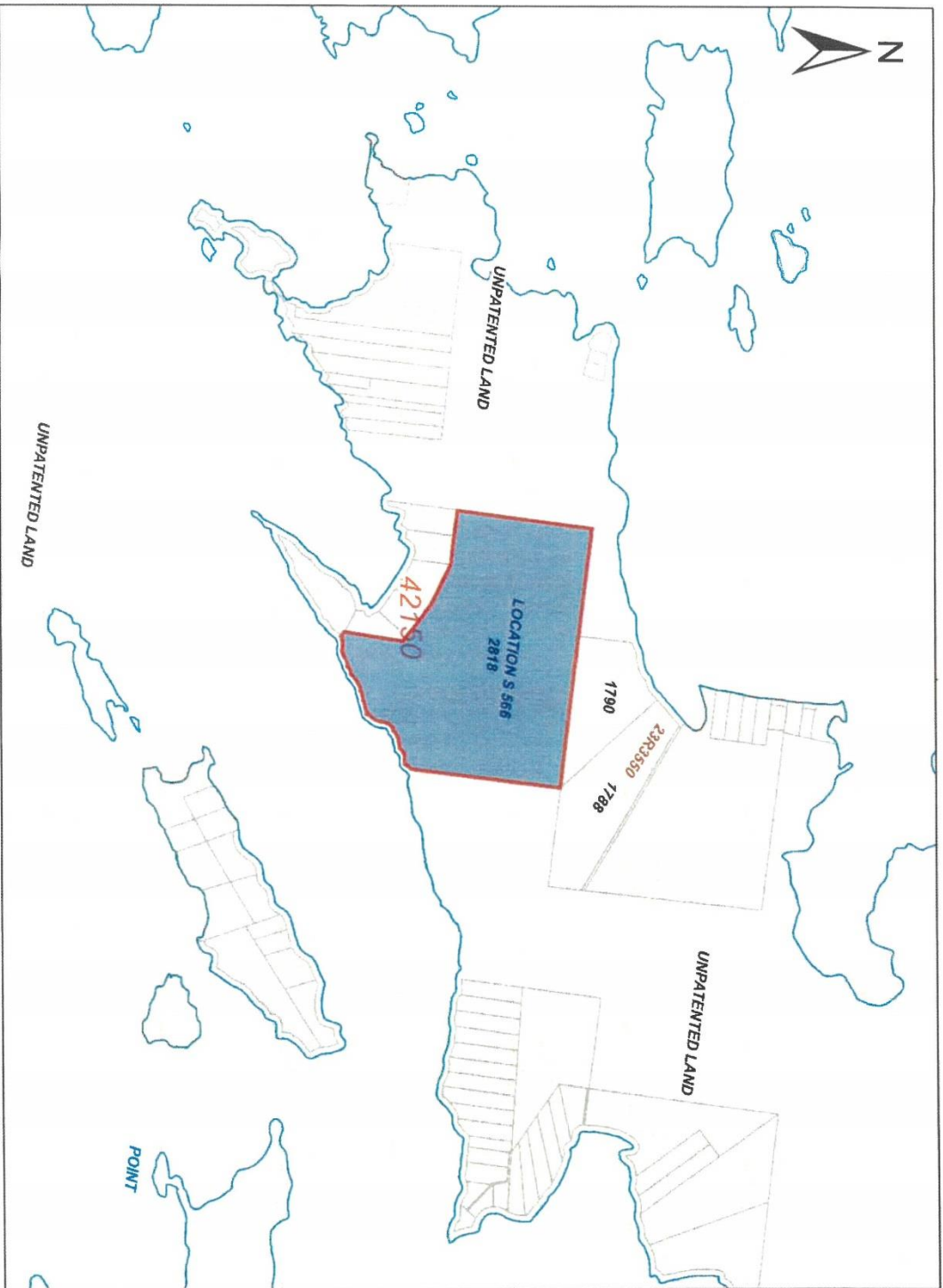
**Access:** Water accessible during summer and ice road access in the winter

**Taxes:** \$2,207.00 in 2020

**Comments:** Own this large acreage with original log cabin

**File 4455**

**\$899,000**



**ServiceOntario**

PRINTED ON 30 APR, 2021 AT 10:19:54  
FOR RVALENCIA

**SCALE**



**PROPERTY INDEX MAP**  
KEMORA(No. 23)

**LEGEND**

- FREEHOLD PROPERTY
- LEASEHOLD PROPERTY
- LIMITED INTEREST PROPERTY
- CONDOMINIUM PROPERTY
- RETIRED PIN (MAP UPDATE PENDING)
- PROPERTY NUMBER
- BLOCK NUMBER
- GEOGRAPHIC FABRIC
- EASEMENT

**THIS IS NOT A PLAN OF SURVEY**

**NOTES**

REVIEW THE TITLE RECORDS FOR COMPLETE PROPERTY INFORMATION AS THIS MAP MAY NOT REFLECT RECENT REGISTRATIONS  
THIS MAP WAS COMPILED FROM PLANS AND DOCUMENTS RECORDED IN THE LAND REGISTRATION SYSTEM AND HAS BEEN PREPARED FOR PROPERTY INDEXING PURPOSES ONLY  
FOR DIMENSIONS OF PROPERTIES BOUNDARIES SEE RECORDED PLANS AND DOCUMENTS  
ONLY MAJOR EASEMENTS ARE SHOWN  
REFERENCE PLANS UNDERLYING NON-RECENT REFERENCE PLANS ARE NOT ILLUSTRATED

