



LISTING HIGHLIGHTS

OFFICE: 807.468.3541 TOLL FREE: 800.528.8848 FAX: 807.468.4676
138 MAIN STREET S. | KENORA ONTARIO | P9N 1S9 | CABINCOUNTRY.COM



Lot 6 Bell's Point Subdivision
PIN 42134-0556
Black Sturgeon Lake

Lot

- 2.87 acres
- West Exposure
- 406.8 Feet of Frontage
- Medium profile with sunset view
- Mature trees

Services: Hydro at Lot Line

Access: Road access

Taxes: \$2,675.51 in 2019

Comments: Build your dream home/cottage here!

File 8069

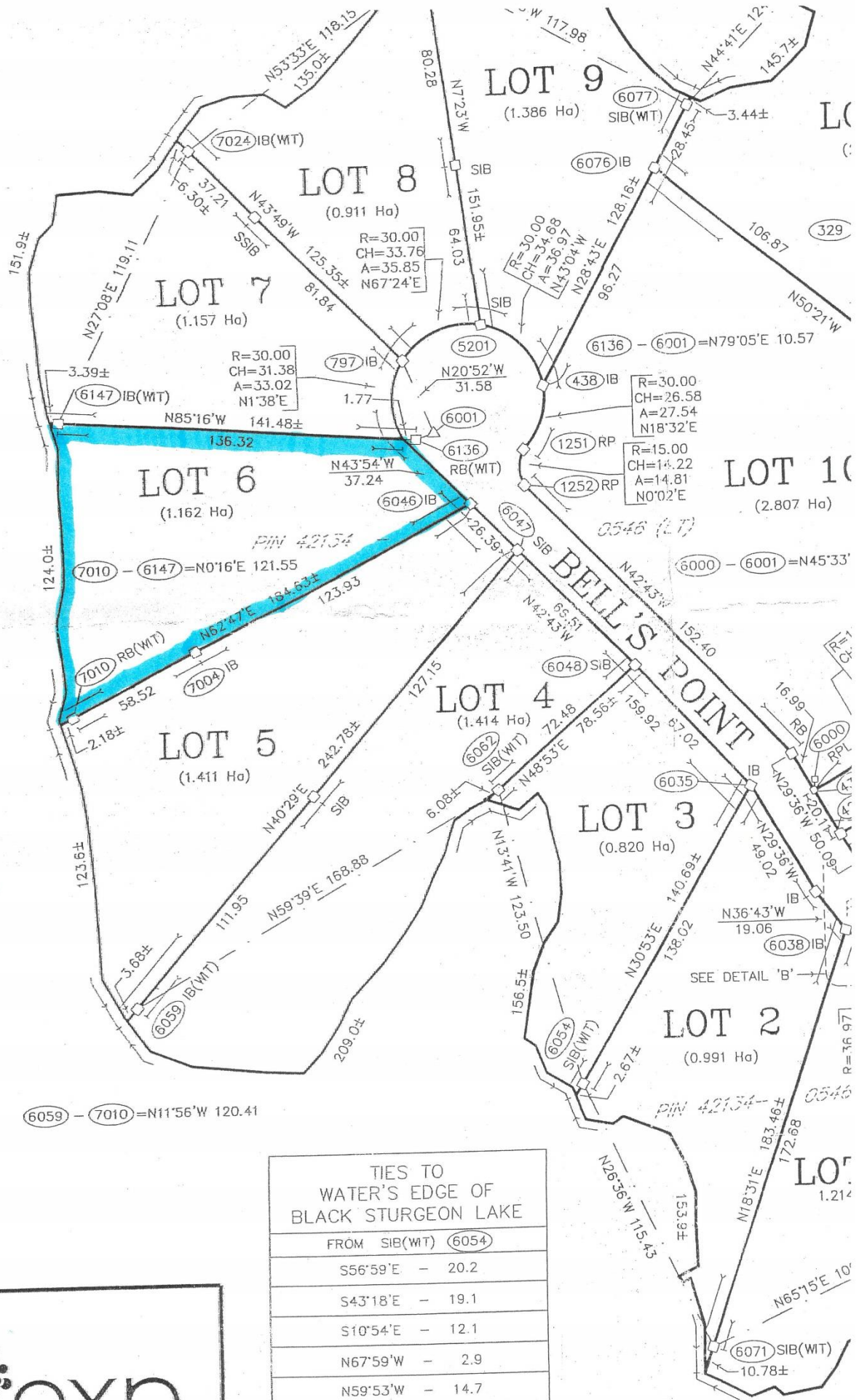
\$219,000

52°W	-	80.2
28°W	-	66.6
14°W	-	65.3
00°W	-	47.5
03°W	-	30.6
52°W	-	16.3
58°W	-	13.0
06°W	-	25.5
58°E	-	44.9
9°39'E	-	59.8
0°12'E	-	76.2
8°32'E	-	94.1
8°48'E	-	115.7

TIES TO
OWNER'S EDGE OF
STURGEON LAKE

SIB(exp)(WT) (436)

79°10'E	-	34.7
12°19'E	-	24.3
19°18'E	-	11.3
14°19'W	-	18.5
27°04'W	-	33.2
40°52'W	-	45.8
41°21'W	-	52.3
44°50'W	-	62.0
42°13'W	-	73.0
41°28'W	-	82.3
47°09'W	-	94.7
49°58'W	-	95.2
51°46'W	-	104.5
61°09'W	-	114.4
70°20'W	-	106.3
80°32'W	-	106.8
80°04'W	-	109.8
81°21'W	-	111.4
82°50'W	-	103.0
87°58'W	-	103.1
80°34'W	-	104.5
75°26'W	-	110.0
70°28'W	-	120.1



TIES TO
WATER'S EDGE OF
BLACK STURGEON LAKE

FROM	SIB(WT)	(6054)
S56°59'E	-	20.2
S43°18'E	-	19.1
S10°54'E	-	12.1
N67°59'W	-	2.9
N59°53'W	-	14.7
N43°29'W	-	24.7
N45°15'W	-	30.0
N27°39'W	-	40.6
N10°47'W	-	50.4

omatics Inc.

3.8516 | f. +1.807.468.7282

West South
P9N 1S9

geomatics.com

The new identity of Trow Geomatics

BLACK S