

LISTING HIGHLIGHTS

OFFICE: 807.468.3541 TOLL FREE: 800.528.8848 FAX: 807.468.4676
138 MAIN STREET S. | KENORA ONTARIO | P9N 1S9 | CABINCOUNTRY.COM



PIN 42120-0024
2505 Pipestone Point
Lake of the Woods

Lot

- Lot: 282 feet frontage
- 2.24 acres
- Medium Profile
- Well treed
- Great Privacy
- Winter access

Improvements

- | | |
|--|---|
| <ul style="list-style-type: none"> ○ 3 Bedroom cottage ○ Open living/kitchen area ○ Built in 1990's ○ Attached deck with North East view ○ Small sleeping cabin overlooking the water with generator hook up ○ Dock at water's edge in front of main cabin | <ul style="list-style-type: none"> ○ New shore dock and floating dock at sleeping cabin ○ 3000w Pro Point Generator ○ New 1500w Solar system ○ New Solar electric fridge ○ 2 Outdoor Privy's ○ Storage Shed |
|--|---|

Services: Lake drawn water and wood burning stove, Solar and Generator, Winter access

Access: South of Hay Island in Moore Bay area

Taxes: \$1,429.00 for 2020

File 4424

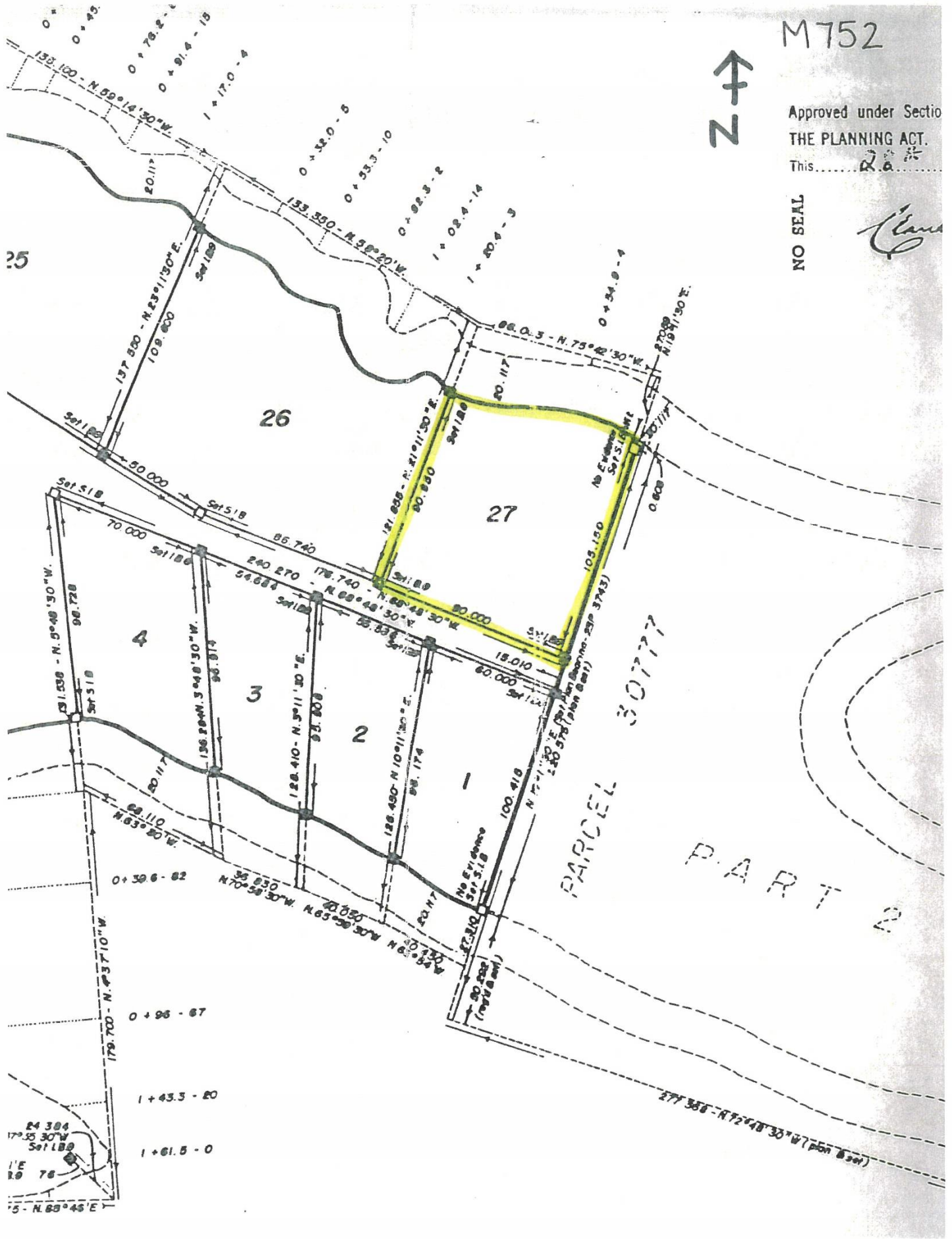
\$249,000

M752



Approved under Section
THE PLANNING ACT.
This 20/08/08

NO SEAL



25

26

27

4

3

2

PARCEL 30777

PART 2

24 384
170° 55' 30" W
Ser. 1. 1. 8
1'E
R. 9 78
15 - N. 80° 45' E

0 + 96 - 87
1 + 43.5 - 20
1 + 61.5 - 0

277 388 - N. 72° 48' 30" W (plan 8 ser)