

# LISTING HIGHLIGHTS

OFFICE: 807.468.3541 TOLL FREE: 800.528.8848 FAX: 807.468.4676  
138 MAIN STREET S. | KENORA ONTARIO | P9N 1S9 | CABINCOUNTRY.COM



**PIN 42153-0182**  
**41 Darlington Trail**  
**Keewatin**

**Lot**

- 1.66 acres
- 231.96 feet of frontage
- Fronting on Middle Lake

**Improvements**

- |  |  |
|--|--|
| <ul style="list-style-type: none"> <li>○ 1700 sq. ft Main floor</li> <li>○ 500 sq. ft Master suite</li> <li>○ 5 bedrooms</li> <li>○ 3 bathrooms</li> </ul> | <ul style="list-style-type: none"> <li>○ Stone fireplace</li> <li>○ Wrap around decks two levels</li> <li>○ Dock and sitting area at water</li> <li>○ Large garage and workshop</li> </ul> |
|--|--|

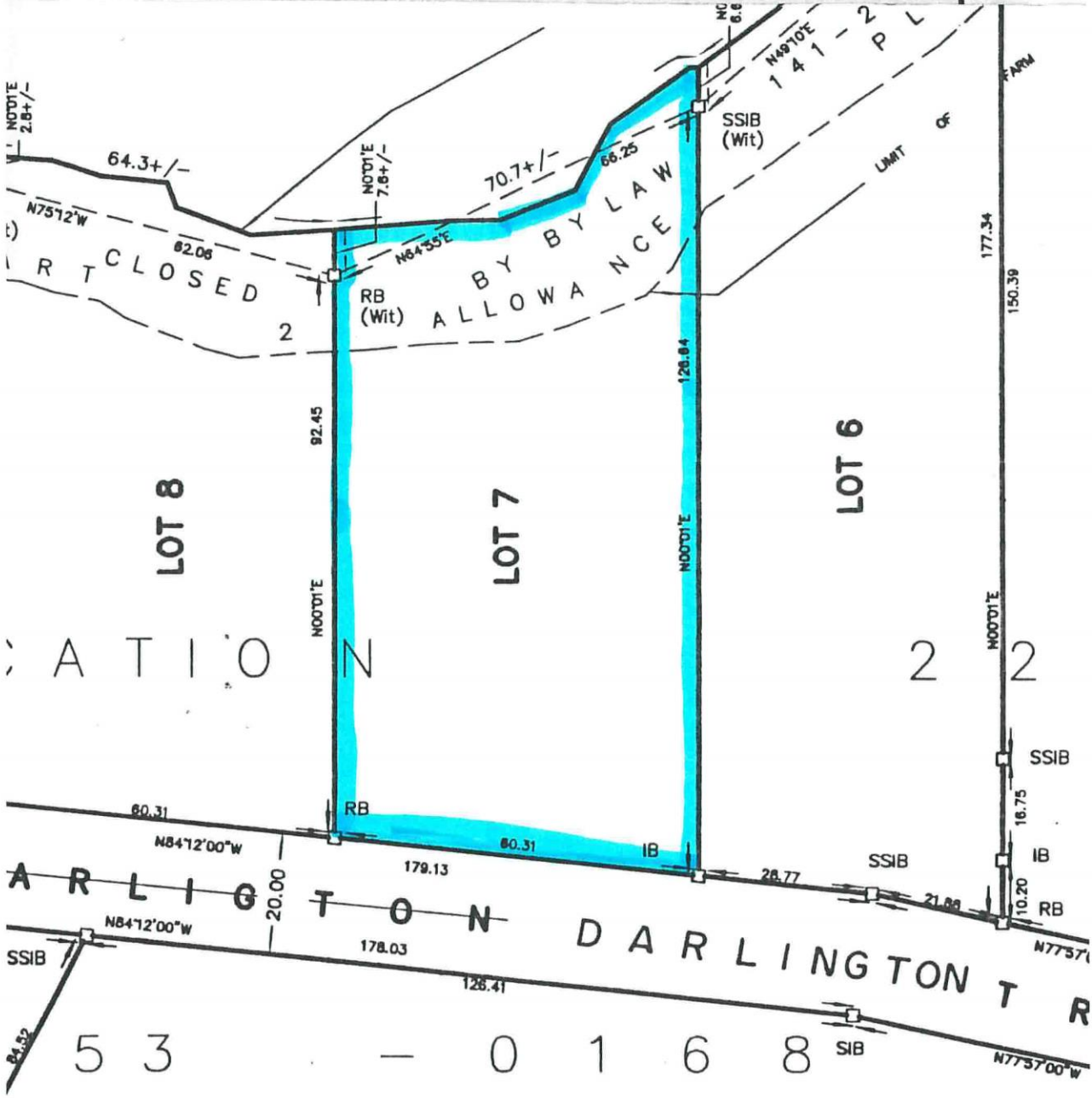
**Access:** Duffus Road. Stay right on Duffus until Darlington Trail. Follow Darlington Trail until you see driveway 41, then turn right.

**Taxes:** \$6,600.00 in 2018

**Comments:** Stunning custom-built home on Darlington Trail and overlooking Middle Lake. This 5-bedroom three bath home will not disappoint. An upstairs 500 sq.ft. master oasis is complete with sitting area, large walk in closet, and a spa bathroom. Downstairs you will find a walkout basement with living room, two bedrooms, a full bathroom and a bonus room that is plumbed in to have a kitchen or wet bar area. Attached one car garage, and separate oversized garage with workshop just steps away from the house. Outside you will find wrap decks on both levels that lead down to the the dock and gazebo area. This custom home is a must see.

**File 4232**

**\$799,900**



NOTE 2.8+/-

64.3+/-

NOTE 7.6+/-

70.7+/-

66.25

SSIB (Wit)

MC 8.6

N49°10'E 141-2 P L

FARM

LIMIT OF

RT CLOSED

2

RB (Wit)

N64°55'E

BY BY LAW ALLOWANCE

LOT 8

LOT 7

LOT 6

ARLINGTON

MOODIE

MOODIE

MOODIE

MOODIE

2 2

60.31

N84°12'00"W

20.00

AR L I G T O N

179.13

60.31

IB

26.77

SSIB

SSIB

16.75

IB

10.20

RB

SSIB

N84°12'00"W

178.03

126.41

D A R L I N G T O N R

5 3

- 0 1 6 8

SIB

N77°57'00"W

T O W N

LOT 11

ALLOWANCE  
3  
A W 141 - 2006 IN

PLAN 23R-11291